



## Attend the Annual Meeting Sept. 22

The 2017 Conservancy Annual Meeting will be held on **Friday September 22<sup>nd</sup>** at the Waldorf Jaycees. Invitations have been sent and reservations must be received by **September 15**. Plan now to attend– this is our only meeting for the membership and our major fundraiser. It is a great opportunity to spend time with fellow Conservancy supporters and enjoy a night out. Cash bar is at 6 pm with dinner starting at 7 pm.

Our entertainment this year will be provided by Maher Kamal Matta, who has performed at comedy clubs around the country, corporate events, weddings, and birthdays. His material ranges from observational humor to stories of his childhood, as well as from the perspective of a husband, father, and former policeman. The Conservancy Heritage Award will be presented to Jim Long and elections will take place for officers and new Board members.

And don't forget the popular Silent Auction! Do you have an item to donate? Gift cards or certificates, collector's items, specialty food baskets, and fine art items are welcome. If you can contribute, please contact Matt Simpson in advance of the dinner ([matthewtsimpson@yahoo.com](mailto:matthewtsimpson@yahoo.com); 301-751-6042). For more information or for an invitation, contact Hal Delaplaine (301-934-8175).



*Clamber Hill Photo courtesy of Hal Delaplaine*



## Donate to the Conservancy through AmazonSmile

Getting ready to do some back-to-school or holiday shopping on Amazon.com? Don't forget an easy way to help the Conservancy– use AmazonSmile! AmazonSmile is a website operated by Amazon with the same products, prices, and shopping features as Amazon.com. The difference is that when you shop on AmazonSmile, the AmazonSmile Foundation will donate 0.5% of the purchase price of eligible products to the charitable organization of your choice. You can use your existing Amazon.com account on AmazonSmile or you can set up a new account if you do not have one.

To donate to the Conservancy, on your first visit to AmazonSmile ([smile.amazon.com](http://smile.amazon.com)), you will be prompted to select a charitable organization from the list of eligible organizations. Select "Conservancy for Charles County, Inc." before you begin shopping. Your selection will be remembered, and then every eligible purchase you make at [smile.amazon.com](http://smile.amazon.com) will result in a donation to the Conservancy.

## Easement Spotlight: Baldus II (Clamber Hill) By Hal Delaplaine

The Baldus II (Clamber Hill, Port Tobacco) conservation easement protects 24.9 acres of mostly upland and bottomland hardwood forest on a steep slope down into approximately 400 linear feet of Port Tobacco Creek. A small unnamed tributary flows across the floodplain of the property into the creek.

*Easement Spotlight continued on p.4*



## Increased Protection for Our Aquatic Resources: Watershed Conservation District Established in Charles County

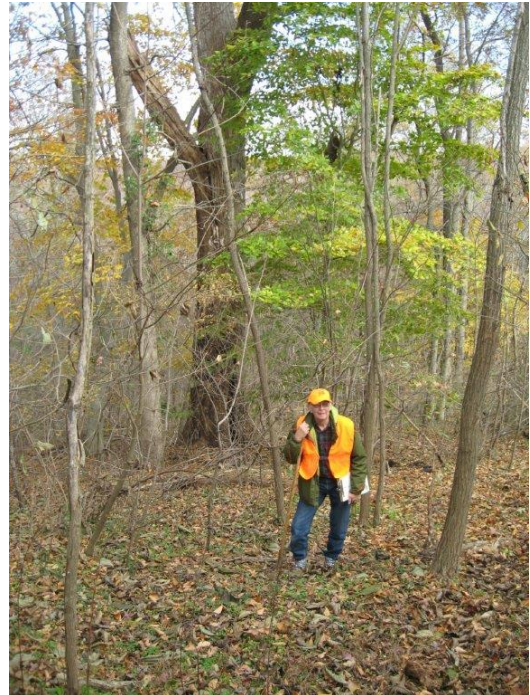
Implementation of the Charles County Comprehensive Plan (Comp Plan), adopted last summer, recently took another step with the establishment of the Watershed Conservation District (WCD). This rezoning effort establishes the detailed development standards and regulations for the general policy issue related to watershed conservation, ensuring that the Comp Plan will be carried out as intended. The objective of the WCD is to protect the Mattawoman Creek Stream Valley and the headwaters of the Port Tobacco River. The protections are critical to protect the natural resources of these watersheds for their long term value to the community; their ecological, aesthetic, and scenic values; and for their recreational and economic value as a sustainable natural resource.

Designation of the WCD effectively rezones 36,000 acres of land in the Mattawoman Creek and Port Tobacco River watersheds to protect the remaining undeveloped areas within the WCD. The new zoning limits new residential subdivisions to a density of one unit per 20 acres. In addition, impervious surface coverage (areas where rain cannot penetrate such as house footprint, driveways, sheds, etc.) will be limited to 8% of the total area, or to

*Watershed Conservation District continued on p.4*



Mattawoman Creek, Image by Will Parson



**Dale Flowers, former Conservancy Board member, assists with monitoring a property in conservation easement. Confirming that a property still meets the conditions of the easement is a primary function of a land trust. Photo courtesy of Hal Delaplane**

## Recent Conservancy Activities

- Hollmann Award was renewed
- Booth at ArtsFest
- Attendance at Maryland Land Conservation Conference, MET Quarterly Roundtable
- Submitted 2016 monitoring information to MET for 20 co-held easements
- Provided testimony at several public hearings
- Donation to John Hutson Memorial Fund
- Port Tobacco Players fundraiser

## Maryland's State Wildlife Action Plan

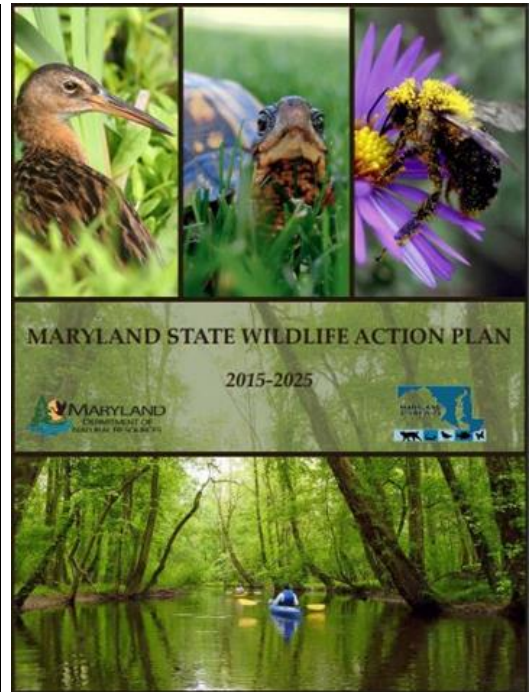
### What is a State Wildlife Action Plan?

Nationwide, State Wildlife Action Plans (SWAPs) are an important tool for successful wildlife conservation. Coordinated through the U.S. Fish and Wildlife Service, SWAPs outline strategic conservation approaches for wildlife and their habitats in each state and territory of the U.S. The Maryland 2015–2025 SWAP represents a shared vision and a strategy that was developed by working with state, federal, and local organizations that partner with Maryland Department of Natural Resources for wildlife conservation.

### Why is Maryland an important place for wildlife?

#### Why are wildlife important to Maryland?

More than 15,000 animal and plant species call Maryland home. Nearly 1,200 of these species are rare, uncommon, or declining. Maryland's landscape, wetlands, and waterscape, including the Chesapeake Bay and Atlantic Ocean, support some of the country's most imperiled and endangered species, such as the dwarf wedgemussel, piping plover, and bog turtle. Some animals in Maryland are found virtually nowhere else in the world. Wildlife-related recreation generated over \$1 billion in revenue for local economies in Maryland in 2011, with the greatest revenue contributed by fishermen, hunters, and wildlife-watchers. The Chesapeake Bay, the largest estuary in the nation, generates hundreds of millions of dollars annually in shellfish and finfish harvests, with additional revenue and jobs produced by tourism and recreation industries in the region. Maryland citizens' appreciation for the state's natural areas is crucial to the protection of the species that live in these habitats.



### What species and habitats are covered in the Plan?

The SWAP identifies animal Species of Greatest Conservation Need (SGCN), their habitats, and also plant species of concern. Maryland's 610 SGCN are representative of many animal groups, including mammals, birds, reptiles, amphibians, fishes, insects, freshwater mussels, and other invertebrates. A total of 59 aquatic and terrestrial key wildlife habitats were identified during the SWAP revision. Together they represent a diverse portfolio of ecological systems, each bound by a similar physiography, geology, hydrology, climate, soil composition, flora, or other significant characteristics.

### What are threats to Maryland's wildlife and habitats, and what can we do about it?

Maryland's SWAP details threats such as potential impacts from changes in land use, energy production, and transportation; modifications of natural systems; biological resource use; invasive species; pollution; climate change; resource management needs; recreation needs; and education/outreach needs.

Over 1,000 conservation actions were developed for Maryland's SWAP with the help of many conservation partners and experts. These actions fall into several major categories: land and water acquisition and protection; law and policy; direct management of natural resources; planning and administration; data collection and analysis; education, outreach, and technical assistance; and climate change adaptation strategies. In this way, the SWAP provides a blueprint for all conservation partners in Maryland, including the Conservancy for Charles County, to work together to keep common species common, recover legally-protected species, and ensure that future generations can enjoy Maryland's full array of wildlife. For more information, go to:

[http://dnr.maryland.gov/wildlife/Pages/plants\\_wildlife/SWAP\\_Submission.aspx](http://dnr.maryland.gov/wildlife/Pages/plants_wildlife/SWAP_Submission.aspx)



***Easement Spotlight, continued from p.1***

The late Carl R. Baldus, Jr. donated the easement in 2003 to be jointly held by the Conservancy and the Maryland Environmental Trust (MET). Its purpose is to maintain the property's open space with its dominant rural, woodland and wetland characteristics. It is part of a larger conservation area in that it is across Rose Hill Road from the 360-acre Thomas Stone National Historic Site. Its 20 acres of forest is potential habitat for Forest Interior Dwelling Species (FIDS). To protect Port Tobacco Creek from timbering on the steep slope, the conservation easement includes an unusually broad 500-ft vegetative buffer.

The only structure at the time of recordation was a barn although the easement allows for one reserved home site for a single-family dwelling unit with associated accessory structures connected to the agricultural uses of the property. Subdivision is prohibited.

In 2002, the F-4 La Plata tornado passed directly over the property, devastating the forest and destroying the barn which was subsequently replaced. Clearing and removing the damaged and destroyed timber was long and difficult. Now, after 15 years, the young upland forest continues to recover. At present, it's a daunting tangle of young trees, underbrush, brambles, and briers, but given time and the perpetual protection of the conservation easement, ecological succession will work its magic to ultimately result in a mature climax forest once again.

***Editor's Note:***

*As I am leaving the Board, I am looking for a volunteer to take over the newsletter. Please contact me if you are interested!*

*Gwen Brewer  
3wigeons@verizon.net, 410-741-9129*

***Watershed Conservation District, continued from p.2***

10,500 square feet for properties under 3 acres. Additions or accessory uses to existing homes can be up to 25% of the main building's footprint. Lots of 10 acres or larger can be subdivided for family members (up to two additional lots).

Existing developed properties will remain, as will areas previously zoned for commercial and business park use. An additional aspect opens the possibility of allowing industrial use of areas around the Maryland airport in Bryans Road after a feasibility study by County planning staff has been completed.

The County web site has information on the WCD which contains a generalized map at <http://www.charlescountymd.gov/pgm/planning/water-conservation-district-wcd>

An interactive map is also available online that allows you to zoom into particular areas. Go to <http://www.charlescountymd.gov/pgm/rim/pgm-maps> and click on the tab labeled "PGM GIS Interactive Map". The WCD map can also be viewed at the County's Department of Planning & Growth Management at the Administrative Offices in La Plata.

## There's still time- please renew or join for 2017!

Please indicate payment of your membership dues only, donation only, or both when you send in the form below. Remember that your dues and donations to the Conservancy are tax deductible. Your dues and donations are critical to continue our work.

You can also renew or join from our website using PayPal at [conservecharles.org](http://conservecharles.org)!

Don't let your membership lapse- we need your help to preserve the natural and historical landscapes of Charles County!

**Please join us to help preserve Charles County's natural and historic landscapes. Fill out the form below to become a member or otherwise contribute.**

Annual dues—

\_\_\_ individual \$35    \_\_\_ family \$50    \_\_\_ student \$15    \_\_\_ organization \$100

Dues and contributions are tax deductible. The Conservancy is listed as a 501(c)(3) nonprofit tax-exempt organization with the State of Maryland.

Name(s): \_\_\_\_\_

Organization (if organization membership): \_\_\_\_\_

Address: \_\_\_\_\_

City: \_\_\_\_\_ State: \_\_\_\_\_ Zip: \_\_\_\_\_

Tel: \_\_\_\_\_ Fax: \_\_\_\_\_

E-mail: \_\_\_\_\_

**Please send the Newsletter by e-mail only to conserve resources** \_\_\_\_\_

Annual dues enclosed \$ \_\_\_\_\_

Added contribution \$ \_\_\_\_\_

Total \$ \_\_\_\_\_

Please make your check out to "Conservancy for Charles County, Inc." and mail with this form to:  
Conservancy for Charles County, P.O. Box 1358, Waldorf, MD 20604

**Conservancy for Charles  
County, Inc.**

P.O. Box 1358  
Waldorf, MD 20604

**Phone:**  
301-932-5714

**E-Mail:**  
info@conservecharles.org

**Quiet forests.  
Green and golden fields  
crisscrossed with streams.  
Historic homes, silvery  
cedar barns, scenic roads.  
All worth preserving for  
today and forever.**



**CONSERVANCY**  
for Charles County, Inc.

---

*We're on the Web!*

*Visit us at:*

[www.conservecharles.org](http://www.conservecharles.org)

---

Conservancy for Charles County, Inc.  
P.O. Box 1358  
Waldorf, Maryland 20604

**In this issue:**

- Annual Meeting Sept. 22
- Donations through AmazonSmile
- Watershed Conservation District
- Easement Spotlight
- Maryland State Wildlife Action Plan

